

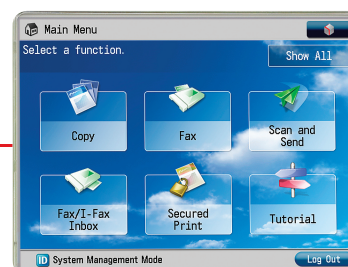
Next generation entry-level colour printing

imageRUNNER ADVANCE
C2020L/i
C2030L/i

you can

Introducing a range of entry-level imageRUNNER ADVANCE colour multifunctional devices. Designed to combine exceptional productivity, superb integration with office workflows and outstanding environmental credentials in a small, easy-to-use device.

UP TO 30PPM COLOUR AND MONO
COMPACT DESIGN
ADVANCED WORKFLOW INTERGRATION
5.7" COLOUR TOUCH SCREEN UI
LOW POWER CONSUMPTION
INNER STAPLE FINISHER



Productivity

- Easy-to-use, personalised user interface
- Up to 30ppm output
- Adobe Reader Extensions™ (optional) which allows users to edit PDF files without the need for Adobe Acrobat™ software
- Integrates with office workflow solutions
- Support for genuine Adobe PostScript3*
- Wide range of scalable MEAP applications
- Share functionality with other imageRUNNER ADVANCE devices

Environmental

- Uses recycled and bio-plastics
- Excellent energy efficiency
- As low as 1.5 watts power consumption in sleep mode – lowest TEC rating in class
- Energy Star certified
- One of the smallest footprint in class

Security

- HDD data erase & encryption*
- Removable HDD*
- Network encryption(IPSec, IEEE802.1x)
- Digitally sign scanned documents
- Compatibility with Adobe Rights Management™
- Integrates with card authentication systems

*i models only

 **imageRUNNER**
ADVANCE

Canon

Specifications: imageRUNNER ADVANCE C2020L/i / C2030L/i

BASIC SPECIFICATIONS	
Type	Console
Maximum Original Size	A3
Copy Sizes	Cassette 1 to 4: A3 to A5R, Free size (Cassettes 1 : 148 x 182mm to 297 x 457mm, Cassettes 2-4 : 140 x 182mm to 305 x 457mm). Stack Bypass: SRA3 to A5R, Free size (99x140mm - 320 x 457mm)
Resolution	Reading: 600dpi x 600dpi, Copying: 600dpi x 600dpi Printing: 600dpi x 600dpi, 1200dpi x 1200dpi (half speed), 9600dpi (enhancement) x 600 dpi
Copy/Print Speed	256 Gradations A4: 30 cpm (iR-ADV C2030L/i), 20 cpm (iR-ADV C2020L/i) A3: 15 cpm (iR-ADV C2030L/i), 15cpm (iR-ADV C2020L/i) A4R: 20cpm (iR-ADV C2030L/i, iR-ADV C2020L/i) A5R: 30 cpm (iR-ADV C2030L/i, 20 cpm (iR-ADV C2020L/i)
Enlargement/ Reduction	Zoom: 25 - 400% (Zoom ratio every 1%)
First copy time	BW: 5.9 seconds, CL 8.9 seconds
Warm-Up Time	38 seconds or less
Multiple Copies/Prints	1 to 999 sheets
Duplexing	Standard Automatic
Paper weight	Cassettes 1: 64 to 120gsm, Cassettes 2-4: 64-163gsm Stack Bypass: 64 to 220gsm Duplex: 64 to 120gsm
Paper Capacity	Standard: 250 sheets + 550 sheets Cassettes (800 sheets) Stack Bypass: 100 sheets Optional: 550 sheets x 2 Cassettes (1,100 sheets) Max. paper capacity: 2,000 sheets
Processor speed	0.8GHz
Memory	RAM: 1GB + 1GB (total: 2GB)
Hard Disk Drive	iR-ADV C2020L/2030L: Flash 4 GB iR-ADV C2020i/2030i: HDD 80GB
Display Interface	5.7" TFT VGA Colour Touchscreen, Ethernet (1000BaseT/100Base-TX/10Base-T), Wireless LAN(IEEE802.11b/g (Optional), USB2.0
Network Protocols	TCP/IP* (LPD/ Port 9100/ WSD/ IPP/ IPPS/ SMB/ FTP), SMB is supported by only i model, IPX/ SPX (ND5, Bindery), AppleTalk, *IPv4/IPv6 support
Power Supply	220-240V, 10A 50/60Hz
Power Consumption	1.5 kW Max.
Dimensions (W x D x H)	L models: 565mm x 650mm x 791mm i models: 565mm x 680mm x 928mm (with ADF)
Installation space (W x D)	iR-ADV C2030L / 2020L: 846mm x 1109mm (multi tray + Cassette extended) iR-ADV C2030i / C2020i: 846mm x 1139mm (multi tray + Cassette extended)
Weight	Printer only: approx. 69kg (L model), 73kg (i model) L model + Platen: approx 78kg, i model + Platen 82kg, L model + ADF: Approx 84kg, i model + ADF 88kg
PRINT SPECIFICATIONS	
Page Description Language(s)	UFR II (Standard on all models) PCL5/6: (Standard for i models, iR-ADV C2030i /2020i, Optional for L models: iR-ADV C2030L/2020L with Canon PCL Printer Kit-AG1), Adobe PostScript 3 (Optional on i models only with Canon PS Printer Kit-AG1)
Resolution	600dpi x 600dpi, 1200dpi x 1200dpi (half speed), 9600dpi (enhancement) x 600dpi
Fonts	PCL fonts: 93 Roman, 10 Bitmap, 2 OCR, PS fonts: 136 Roman
Supported Operating Systems	UFR II: Windows 2000/ XP/ Server 2003/ Vista/ Server 2008/ Windows 7/ Server 2008 R2, MAC OS X (10.4.9 or later) PCL: Windows 2000/ XP/ Server 2003/ Vista/ Server 2008 / Windows 7/ Server 2008 R2 PS: Windows 2000/ XP / Server 2003/ Vista/ Server 2008/ Windows 7/ Server 2008 R2, MAC OS X (10.4.9 or later) MAC-PPD: MAC OS 9.1 or later, MAC OS X (10.2.8 or later)
SCAN SPECIFICATIONS	
Optional/Standard	Requires optional Duplex Colour Image Reader Unit-D1
Scan Speed	Scan (Single side): A4 30 ipm 600dpi (CL/BW), 44 ipm 300dpi (CL/BW), Scan (Double side): A4 13 ipm 600dpi (CL/BW), 19 ipm 300dpi (CL/BW)
Scan Resolution	100dpi, 150dpi, 200 x 100dpi, 200dpi, 200 x 400dpi, 300dpi, 400dpi, 600dpi
Pull Scan	Via Network TWAIN Driver (75 to 600 dpi Black & White and Colour) Pull Scan Supported OS: Windows 2000/ Windows XP/ Windows Server 2003/ Windows Vista/ Windows Server 2008/ Windows 7, (32 bit, 64 bit in compatibility mode)

SEND SPECIFICATIONS	
Optional/Standard	iR-ADV C2030L/2020L: option (it requires Colour Universal Send Kit-R1 and Colour Image Reader D1 or D2) iR-ADV C2030i/2020i : standard but requires optional Colour Image Reader Unit-D1 or D2
Destinations	E-Mail/ Internet FAX (SMTP), PC (SMB, FTP), WebDAV
Address book	LDAP, Local (Max.1800), iR-ADV address book (64)
File Format	TIFF, JPEG, PDF, XPS, High compression PDF/XPS, PDF/A-1b, Optimize PDF for Web: only for iR-ADV 2030i/2020i
Universal Send Feature Sets:	Universal Send Advanced Feature Set-E1 (option): Outline PDF (Trace & Smooth), Searchable PDF/XPS, Reader Extensions PDF Universal Send Security Feature Set-D1 (option): Encrypted PDF, Device Signature PDF/XPS, Universal Send Digital User Signature Kit-C1 (option): User Signature PDF/XPS
DOCUMENT FEEDER	
Colour Image Reader Name	Duplex Color Image Reader Unit-D1 (Optional)
Paper size	A3, A4, A4R, A5, A5R
Paper weight	Single sided original: 42-128gsm Double sided original: 50 to 128 gsm (Colour original : 64-128gsm)
max. Number of originals	50 sheets (80 gsm)
Scanning speed (max.)	Copy (Single side): A4 30 ipm 600dpi (Colour/B&W) Scan (Single side): A4 44 ipm 300dpi (Colour/B&W) Copy (Double side): A4 13 ipm 600dpi (Colour/B&W) Scan (Double side): A4 19 ipm 300dpi (Colour/B&W)
Dimensions (WxDxH)	565mm x 540mm x 140mm
Weight	approx. 7.9kg
PAPER SUPPLY OPTIONS	
Cassettes Feeding unit	Cassettes Feeding unit-AF1
Paper size:	A3 to A5R, Free size (140 x 182mm to 305 x 457mm)
Paper weight:	64-163gsm
Paper Capacity:	550 sheets (80gsm)
Dimensions (WxDxH):	565 x 650 x 248mm
Weight:	Approx. 27.5kg
OUTPUT OPTIONS	
Staple Finisher	Inner Finisher - C1
Number of Trays	One stack tray (Optional 2nd tray: Inner Finisher Additional Tray-A1) Standard tray capacity: A4: 750 sheets, A3/A4R: 500 sheets, Option tray capacity: A4/A3/A4R: 100 sheets
Paper Weight	64 to 220gsm
Staple Position	Corner, Double
Staple Capacity	A4: 50 sheets, A3/A4R: 30 sheets
Dimensions (WxDxH)	700 x 540 x 260mm
Option Tray	207 x 450 x 57mm
Weight	Approx. 12.5kg/14kg (included tray option)
ADDITIONAL OPTIONS	
	Stamp Ink Cartridge-C, ADF Access Handle-A1, Color Image Reader Unit-D2, Printer Cover-D1, Data Erase Kit-AE1, HDD Data Encryption Kit-C3, Wireless LAN Board-B2, Removable HDD Kit-AE1, Expansion Bus-F2, IPsec Board-B2, ACCESS MANAGEMENT SYSTEM KIT-B1, Web Access Software-H1, PCL Printer Kit-AG1, PS Printer Kit-AG1, Direct Print Kit (for PDF/XPS)-H1, Barcode Printing Kit-D1, Super G3 FAX Board-AH1, Super G3 2nd Line FAX Board-AH1, Remote Fax Kit-A1, Envelope Feeder, Attachment-D1, 3 Way Unit-C1, Utility Tray-A2, Staple-J1 Copy Tray-J1, Inner 2way Tray-F1, Remote Operators, Software Kit-B1, Voice Guidance Kit-F2, Voice Operator Kit-C2, USB Device Port-C1, Multimedia Reader/Writer-A2, Copy Card Reader Attachment-B2, Card Reader-C1
Some images are simulated for clarity of reproduction. All data is based on Canon's standard testing methods. This leaflet and the specifications of the product have been developed prior to the date of product launch. Final are subject to change without notice.™ and © All company and/or product names are trademarks and/or registered trademarks of their respective manufacturers in their markets and/or countries.	
Canon recommends you use Canon Media for the best results. Please check media (paper) compatibility list to see which variety of paper/media is recommended.	



Canon Inc.
canon.com

Canon Europe
canon-europe.com

English-UK Edition 00000
© Canon Europa NV 2010